

Internet Technician Report XIII

On The Stevens County Crossroads on the Columbia Digital Archive

For September 2013

By Joseph Barreca

The State of the Archive

This is the 13th report in this series and the 35nd month of archiving activity. (To read previous reports, visit <http://crossroadsarchive.org/about/documents/project-progress>.)

Nine months ago at the time of the previous report, we had 23,790 items posted on our archive site. We now have 25,092 items posted. Several of them are Adobe PDF documents with many pages. There are close to 2000 images in process from government agencies. When they are all posted, **we will have around 27,000 items in the archive, 20% above target.** Here is a breakdown of image and payment activity.

Agency or Organization	Omeka	Scanned	Posted	Paid	Owed
Chewelah Historical Center	5231	5790	5765	7169.21	
Clayton Historical Society	609	609	609	834.33	
US Forest Service	0	382		NA	
City of Colville	0	0		0	
City of Marcus	142	142	142	0	
Hunters Museum	1941	2128	2128	2498.88	*
City of Kettle Falls (Library)	945	1152	1142	NA	
Kettle Falls Historical Center	302	301	301	437.03	
Loon Lake Historical Society	1314	1314	1314	1800.18	0
Little Pend Oreille Wildlife Refuge	332	335	332	NA	
Northeast Wash. Genealogical Society	1153	1582	1582	1993.35	*
Northport Historical Society	0	49		0	
Park Rapids (Private)	23	448	448	NA	*
Panorama Gem and Mineral Club	39	367	367	NA	*
Private Contributions	1390	1403	1403	NA	*
Stevens County Historical Society	9585	9731	9585	13319.84	0
Spokane Tribe	0	0		0	
Springdale Pioneer Days Association	235	260	235	356.2	0
Tiger Historical Center	1054	1190	1054	1521.11	
Unaccounted		0	0	0	
US Park Service	0	0	0	NA	
Valley Historical Society	74	74	74	69.87	
Explanatory Postings + Government	8				
Total	23955	27257	25092	Owed	0
Goal		22500	22500	Paid	30000
Remaining Count		-4757	-2592	Allocated	30000
Remaining Percentage		-	-0.1152	Remaining	0
		0.2114222			
* includes PDFs with multiple images				Images Left	0

Tracking Archive Use:

The Crossroads Archive is now a virtual museum in its own right. As such, we track traffic to the site. The graphs below first show the breakdown so far for September, 2013. This demonstrates the kind of information that is being tracked. Following that is a summary chart for all of 2013. We have a steady traffic of from 600 to 700 visitors per month making from 1300 to 1400 visits to the site. Since we are still building inventory and have not developed an extensive set of exhibits or promoted the site aggressively; this is very good traffic. The site was updated to new software in August and was not fully functioning for a week or two. The new software and dedicated server offer substantial improvement for searches and display over the previous site.

Summary of Web Traffic for 2013

Reported period	Month Sep 2013				
First visit	NA				
Last visit	11 Sep 2013 - 08:55				
	Unique visitors	Number of visits	Pages	Hits	Bandwidth
Viewed traffic *	258	583 (2.25 visits/visitor)	5,020 (8.61 Pages/Visit)	7,524 (12.9 Hits/Visit)	163.40 MB (287 KB/Visit)
Not viewed traffic *			40,410	47,986	273.86 MB

* Not viewed traffic includes traffic generated by robots, worms, or replies with special HTTP status codes.

Monthly history

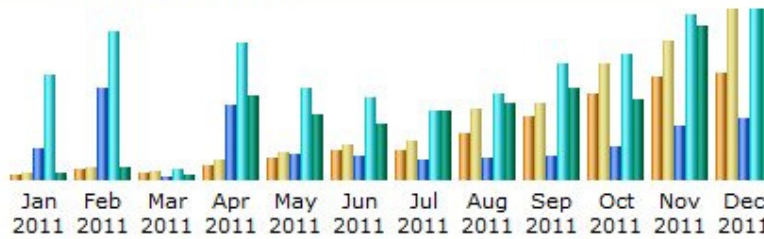


Jan 2013 Feb 2013 Mar 2013 Apr 2013 May 2013 Jun 2013 Jul 2013 Aug 2013 Sep 2013 Oct 2013 Nov 2013 Dec 2013

Month	Unique visitors	Number of visits	Pages	Hits	Bandwidth
Jan 2013	710	1,407	10,612	21,810	1.22 GB
Feb 2013	612	1,296	8,676	22,320	1.27 GB
Mar 2013	661	1,535	6,412	21,622	853.31 MB
Apr 2013	570	1,452	5,783	12,593	1.23 GB
May 2013	575	1,356	6,387	15,234	1.35 GB
Jun 2013	642	1,400	8,844	19,842	864.21 MB
Jul 2013	635	1,437	8,636	22,432	1.57 GB
Aug 2013	603	1,326	6,138	15,305	740.25 MB
Sep 2013	258	583	5,020	7,524	163.40 MB
Total	5,266	11,792	66,508	158,682	9.20 GB

Comparing the above figures to past activity shows a steady growth in archive use over the course of the last year but a decline during the last half of 2012.

Monthly history



Month	Unique visitors	Number of visits	Pages	Hits	Bandwidth
Jan 2011	35	45	1,714	5,692	13.21 MB
Feb 2011	61	84	5,032	8,117	25.12 MB
Mar 2011	43	50	168	549	9.08 MB
Apr 2011	90	125	4,120	7,519	172.37 MB
May 2011	136	171	1,396	5,052	132.33 MB
Jun 2011	186	222	1,345	4,478	111.85 MB
Jul 2011	189	248	1,077	3,749	139.55 MB
Aug 2011	302	448	1,194	4,728	153.61 MB
Sep 2011	405	495	1,264	6,385	185.68 MB
Oct 2011	554	750	1,811	6,918	162.80 MB
Nov 2011	654	892	2,906	9,008	312.59 MB
Dec 2011	679	1,089	3,331	9,313	344.86 MB
Total	3,334	4,619	25,358	71,508	1.72 GB

Monthly history



Month	Unique visitors	Number of visits	Pages	Hits	Bandwidth
Jan 2012	655	1,051	2,769	8,983	245.74 MB
Feb 2012	762	1,688	4,387	10,805	334.12 MB
Mar 2012	1,101	2,057	9,453	13,957	762.30 MB
Apr 2012	672	1,099	4,191	7,724	431.95 MB
May 2012	542	816	3,077	8,762	408.71 MB
Jun 2012	455	620	2,224	5,245	179.95 MB
Jul 2012	502	1,017	2,683	5,748	217.19 MB
Aug 2012	536	898	2,664	6,225	250.22 MB
Sep 2012	207	324	3,880	10,302	403.25 MB
Oct 2012	385	566	6,942	14,838	832.07 MB
Nov 2012	312	434	4,194	17,563	388.73 MB
Dec 2012	404	744	2,100	5,550	277.29 MB
Total	6,533	11,314	48,564	115,702	4.62 GB

The project has been very successful in terms of getting volunteer help to match the grant. The original goals in terms of time and travel were met by the end of 2012. Our experience in developing the archive was leveraged into an educational presentation by Joseph Barreca and Sue Richart on embedding metadata in images at the Washington Museum Association Annual Conference in Seattle last year. The availability of the archive itself helped land another grant to research and archive historical information on the Walla Walla to Colville Military Road in 2013.

The museums involved in the project now have some of their most important documents archived. The images are generating some traffic for them in terms of use and copyright for their images. The curator fees they collected have helped them maintain. In the case of the Chewelah Museum, they were able to add a heated space to their building so that research and archival work can go on during the winter.

A spike in activity during June and July this year may indicate that people are using the archive to plan their summer vacations. Increasing tourism was a main goal of Preserve America and of this project.

The original concept expecting material from the museums to fall neatly into the crossroads themes has not panned out. The original themes were: Native People, The Fur Trade, Government, Mining, Boats, Railways and the Ends of the Road. Material on all of these themes is available in the archive but earlier artifacts and documents are much rarer than items from the 20th century. Rather than index items with just these 7 categories, we have used the Omeka software to create over 500 searchable tags for items in the archive. An alphabetical list of these tags linked to the archive is now online, <http://crossroadsarchive.net/Upload/Tags.pdf>.

Together with our name links, (<http://crossroadsarchive.org/genealogy/name-links>) genealogists have a set of powerful research tool with which to explore the archive. Neither one of these indexes however is automatically updated by the archive software. The archive needs to be maintained. We plan to add more items; create new exhibits; sponsor more discussion on our Facebook page:

<https://www.facebook.com/groups/crossroadsarchive/>; solicit donations online; incorporate local advertizing; continue to preserve more local history; and make it accessible to the world. So although this report marks the end of the Preserve America Grant that started the Crossroads on the Columbia Digital Archive, it is just the beginning of a digital presence for Stevens County history online.